



3 Bedrooms



2 Bathrooms



150m² Living Area.



326m² Plot Size.

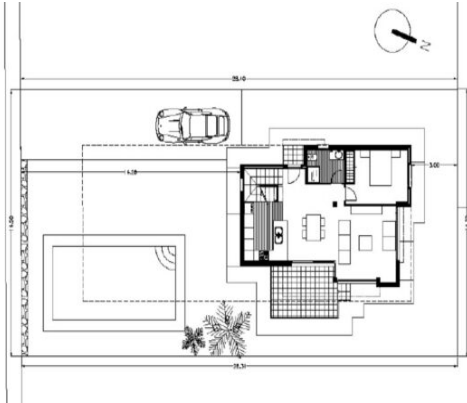


Yes

349,000 EUR

DESCRIPTION

New build, south facing villa for sale in La Sella, located on a FLAT PLOT, close to the GOLF COURSE. On the ground floor: living/ dining room, with a fully equipped open kitchen; terrace, with access to the garden and private pool; double bedroom and a bathroom. On the first floor, 2 further double bedrooms, sharing a family bathroom and terrace. More information about this project on request. HP88151E Extra specifications: hot and cold air conditioning; solar + electric warm water; 8 x 4 swimming pool; parking for 3 cars; automatic gate; double glazing; fitted wardrobes. HP88151E.



PLANTA BAJA

SUPERFICIE CONSTRUIDA VIVIENDA	70,80 M ²
SUPERFICIE TERRAZA CUBIERTA	7,00 M ²
SUPERFICIE TERRAZA DESCUBIERTA	8,80 M ²



PLANTA ALTA

SUPERFICIE CONSTRUIDA VIVIENDA	43
SUPERFICIE TERRAZA DESCUBIERTA	28